

MONTHLY MEMBERSHIP PROGRESS REPORT

District N 1

Results as of: 10/31/2023

GMT:

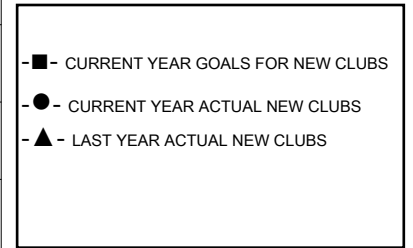
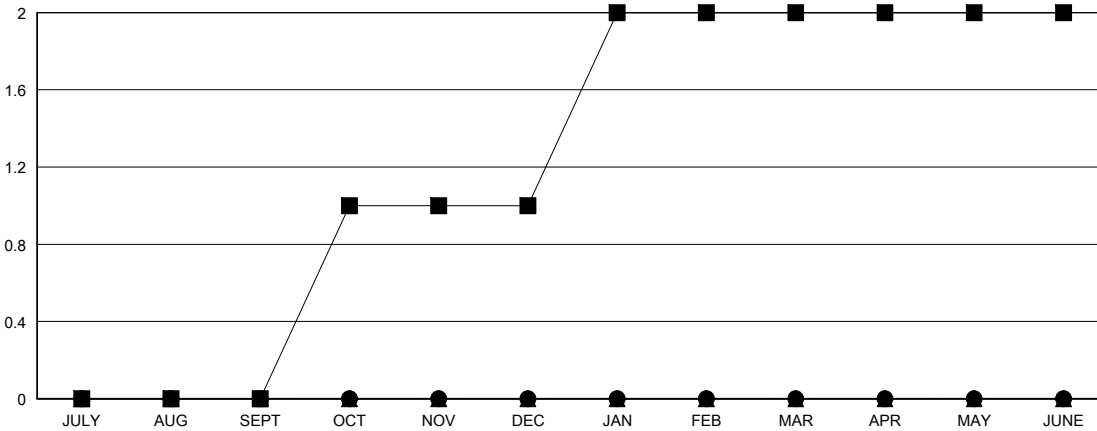
LOCATION PRINCE EDWARD ISLAND

GMT CA

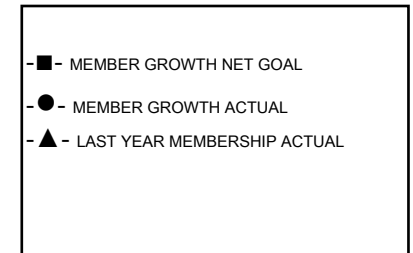
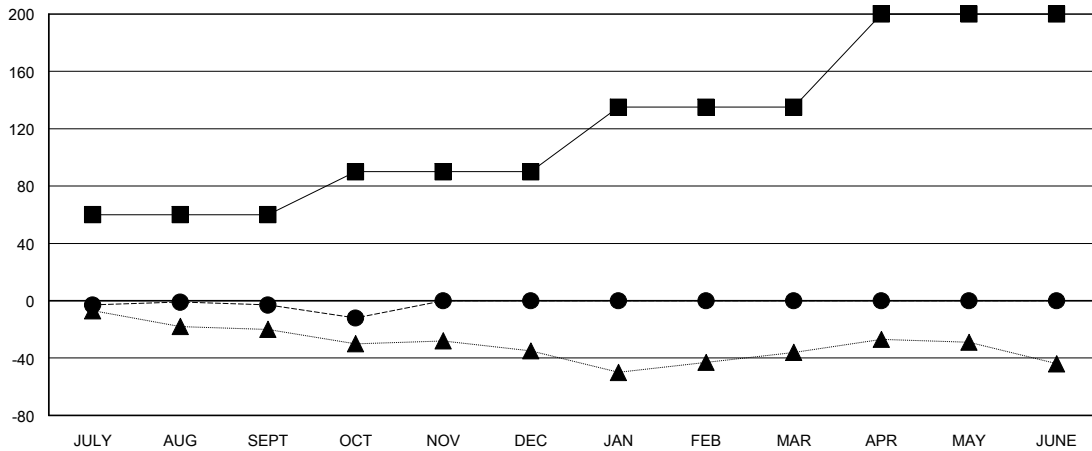
Clubs			
RESULTS FOR 2023-2024			
QUARTER	NEW CLUB GOAL	NEW CLUBS	DROPPED CLUBS
JULY/AUG/SEPT	0	0	1
OCT/NOV/DEC	1	0	0
JAN/FEB/MAR	1	0	0
APR/MAY/JUNE	0	0	0

Members			
RESULTS FOR 2023-2024			
QUARTER	MEMBER GROWTH NET GOAL	MEMBER GROWTH ACTUAL	DROPPED MEMBERS ACTUAL (including transfers)
JULY/AUG/SEPT	60	27	28
OCT/NOV/DEC	30	14	20
JAN/FEB/MAR	45	0	0
APR/MAY/JUNE	65	0	0

GOALS AND ACTUAL NEW CLUBS CUMULATIVE



GOALS AND ACTUAL MEMBERS CUMULATIVE



DROPPED CLUBS: 1	22 CLUBS OF 74 ADDED 1 OR MORE NEW MEMBERS	GENDER DISTRIBUTION MALE 1,099 (70.77%) FEMALE 453 (29.17%)
DROPPED MEMBERS DECEASED 5 CLUB CANCELLED 0 OTHER 43 TOTAL 48	CLICK HERE FOR CUMULATIVE MEMBERSHIP DATA	TOTAL FAMILY UNIT MEMBERS 272 FAMILY MEMBERS PAYING HALF DUES 138